

WHITTIER



ROCKHOUNDING

GEM & MINERAL
SOCIETY

PROGRAM FOR SEPTEMBER :
"RUSSIAN GEMSTONES' VIDEO



SEPTEMBER 1998

ROCKHOUNDER

PRESIDENT'S MESSAGE

I can definitely tell that fall is approaching. The evenings are getting cooler (thankfully). My little patch of popcorn has turned dry and brown, ready for harvesting. The Stock Market appears to have started its annual October decline, albeit a little early this year and our WGMS Rockhounder editor has issued a call for the president's message for the September issue. Of all of the forgoing indicators the latter is the most significant. I hope that all of you have enjoyed well-deserved vacations, perhaps with a little rockhounding thrown in. What am I saying? We rockhounds always manage to get a little collecting in whether by silver pick or gleaning pebbles on some distant beach or by doing it the old fashioned way; we dig it! I can remember one vacation, many years ago, that I picked up a rather large selenite crystal somewhere in Tunisia, and hauled it around the Mediterranean for two weeks in my luggage only to be broken by the airline's delicate handling at LAX Customs. Oh well, easy come easy go.

By the time that this is published, we will have held first meeting of the show committee after the summer hiatus. Our show chairman, **Marcia Grady**, has done an excellent job of organizing, and marshalling the troops to produce what promises to be an excellent gem and mineral show. Our show, "*Treasures of Rockhounding*" will feature rocks from outer space. We will have a replica of the "**Old Woman**" meteorite on display, and as you all know, one of our members, **Darryl Futrell**, specializes in tektites. **Darryl** always has an excellent display of tektites at the **WGMS Gem, Mineral and Jewelry show**.

Marcia has several other innovations for the show, but I'll leave those for other articles about the show, which I am sure that you will find elsewhere in this issue of The Rockhounder. As show time rolls around, each of you will be asked to contribute what you can to make the show a huge success. This may be selling tickets, donating cabochons or finished jewelry for prizes, helping out with the set up and tear down, or any one of the many little tasks that are required to put on a successful show. I know that **Marcia**, and all the members of the show committee can count on your support.

I'm looking forward to seeing you all at the September meeting.

Jerry Turner

September Program

We will be showing a video called "**Russian Gemstones**". Also, if you have any small minerals you would like to donate, it would be greatly appreciated (we are making mineral sets as gifts for the junior drawings, during the show).

Michelle Sebresos

Change in Board Meeting Date

The date of the scheduled September board meeting has been changed from the 1st Thursday, September 3 to the 2nd Thursday, September 10 due to a time conflict. The place is still the **Boys and Girls Club of Whittier** on Greenleaf Avenue, at 7:00 PM.

JValle

Show News

We are now 2 months from our great show, and only 1 general meeting left. Time is flying. All is lining up nicely; the chairmen and chairwomen are terrific. **Les Roy** needs to hear from those who are willing to demonstrate at the show so give him a call (his phone number is on the inside-front cover). We all know how much fun it is to show the public our hobby. **Michelle Sebresos** wants to hear about any donations for the "**Opportunity Drawing**". The **September General Meeting** will be good for that since she doesn't have a home phone right now.

This is going to be an exciting show, and we're hoping that a lot of people will come to see the "**Old Woman Meteorite**" replica. Look for our articles in the local newspapers when it gets closer to the show. We like to know which papers publish what we send for press release.

Marcia Grady

Do You Need a Show Case?

Members planning to display in our October show this year need to contact **Jack Zywocki** as soon as possible to reserve a case. **Jack** can be reached at: (562) 943-1281.

Jack Zywocki

September Door Prizes

Come out to the September meeting and have an opportunity to win one or more of the prizes listed below.

MAIN PRIZE: An 8' tool organizer and holder, just what everybody needs to reduce their tool "clutter".

ADDITIONAL PRIZES:

- 1) A slab of silver onyx.
- 2) A 3" rotary circular end brush
- 3) An insulated 6-pack carrier for those remaining hot days
- 4) A 6" inside-outside caliper tool
- 5) A pocket screwdriver with 6 assorted bits.

Remember, everyone who purchases 10 tickets for \$3.00 fills out a single ticket to go into the December Christmas Party Drawing for a \$50.00 gift certificate. Good Luck!

Vern Cliffe

June Door Prize Winners

MAIN PRIZE: AM/FM Portable Radio- *Bob Akin*

ADDITIONAL PRIZES:

- Dowsing Rods - *Les Roy*
- 2 Gemstone slabs - *Millie Akin*
- Tire Gauge - *Priscilla Kimmel*
- Soldering Iron Kit - *Jim Akin*
- Weekly Planner - *Pat LaBorde*

Thank you to all who participated in the Door Prize Derby!

Vern Cliffe

A Word of Thanks From Jim

My family and I wish to thank all members who attended the June potluck and helped me to celebrate a very memorable birthday. It was nice to have such a BIG surprise party.

Jim Akin

Federation Report

June 21, 1998, **Bill and I** started up the coast for the **CFMS Show and Convention** in Monterey with a short visit and stop in the **Morro Bay/Jade Cove area**. We checked the cove area and went on to the show. It was a nice show, several **WGMS** people were there, but the weather was cold and damp, so there was not much time to stop and visit. We made a few purchases, a 150-lb. rock of Brazilian agate, some petrified oysters, flower stone, etc.

The meetings went well. **Dave Clayton**, from the group who worked on the keeping jade cove open for collecting, told of the trials and tribulations since 1992 when we started this project. After **Jim Strain** gave his report, he and I asked for the **CFMS** support in open a "**Rock Hound Park**" in the **Wiley Wells area**. We were given the go ahead. Jim was able to secure **Ed Hasty**, California state head of BLM. (See article on BLM)

There was discussion of getting in the groove and getting on line. Next year, the **CFMS** will request an e-mail address of the President or member of each club for fast communications. **President Moreau** was directed to seek information on doing a web page.

After a day at home, we headed for the mid-west to take care of some business, then on to **Houghton, Michigan** to the **AFMS show**.

This is "Red Metal", copper country. They had 41 field trips, and much of that copper came back to California with us. So much, in fact, that we had to replace our fuel pump on the way back.

The meeting went well. The big push there was for more sharing of adventures or material throughout the US with more videos. Some of you camera and/or video buffs should get into the act. They gave 3 awards of \$100 each for new video programs, and copies of the programs were given to each member Federation for their film libraries. Next year's awards will be \$200 each.

A report was given on having a Web site and that seems to be a go. **AFMS** will start a site with links to each Federation, and it is hoped that each Federation will pick up the web sites of its clubs.

I was elected to the 1st regional vice president, as a **CFMS Representative**. The next show will be in **Nashville, Tennessee, July 9-11, 1999**. The year after that, it will be held in **Moab, Utah, October 5-9, 2000**.

Bill Burns, CFMS Director

News of the BLM

As I reported, **Jim Strain and I** moved along on the idea of making a special area of the desert in the **Hauser Geode area** for collecting. Well, we met with a little opposition. Many groups are opposed to the idea. Even some of the politicians and higher ups got involved, so that is on hold right now. I even heard that there was picketing against us. At least people know that we exist.

ALAA is going to make one more stand this year to try to get the fossil and mineral bills passed.

Jade Cove was officially opened retroactive to June 16, 1998. You can collect one piece and a limited amount per day.

National Public Lands Day, September 26, chose 26 sites throughout the US. A project will be at **lower Chemehuevi Wash** near **Havasus landing**. Activities will begin after sunrise and will last till late afternoon. They are requesting volunteers who will work on various projects, including maintaining trails, rehabilitating eroded routes, planting native trees, replacing archaeological fencing, installing signs, etc. It is hoped that about 200 volunteers will be out to help. If you are interested let me know and I will get you in touch with **Lesly Smith**. More information can be found at www.ca.blm.gov/needles.

Izzie

Congratulations Bernadette Roy
Blue Ribbon at the Orange County Fair for wire work

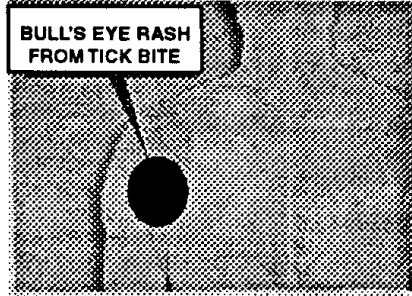
Bernadette had entered 5 items and received a perfect score on all but 1 item (who understands judges?). **Bernadette** is a student at **Baldwin Park Adult School**. Her items can be seen at the upcoming **Los Angeles County Fair**. Perhaps when the shows are over she can be persuaded to give us a private showing at one of our regular meetings (note **Michelle**). **Bernadette** also received letters of congratulations from the **Baldwin Park School District and the Orange county Fair Directors**.

Les Roy

Lyme Disease An Elusive Illness

LA Times - February 20 1998

Lyme disease can be difficult to diagnose because the tick-borne illness causes a range of debilitating symptoms that can be interpreted as other diseases. The disease can be easily treated in its early stages and a vaccine should be available within the year. Here is a look at the infectious malady:



SYMPTOMS

- Tick bite
- Bull's-eye rash
- Flu-like discomfort
- Joint pain
- Fatigue
- Headache
- Lack of concentrate
- Facial paralysis

If you believe you've been bitten by a tick, see your doctor immediately.

PREVENTION TIPS

- Wear long, light-colored clothing when outdoors, including long pants tucked into socks, long-sleeved shirts, and hats.
- Use tick repellent spray on outside of clothes.
- Avoid areas with long grass. When walking on trails, walk in the center and avoid the brush.
- Look for ticks after outdoor activities. They usually are found around the knees, neck, groin and back.
- If you find one, carefully pull it out without tearing the head.

Note: Most ticks need to be embedded for 12 to 14 hours to spread the disease. State health officials say only 1% to 2% of ticks in California carry the bacteria that causes Lyme disease.

From NOC Gem & Mineral Society News 03/98 via LA Times

Greenhorn Mountain Trip Report

The temp dropped as we climbed up the mountain. The lake began to shrink in size.

At camp we found **Dan and Diane** already there. It was sooo refreshing to be somewhere cool. That evening we had to put on jackets.

Friday morning found us refreshed from a good night's rest. We (**Dan, Diane, Marcia and I**) planned where we would go in the afternoon. **Bob and Dorothy Brower** showed up in time to go with us. We went looking for some rose quartz. We found the approximate location with wonderful wildflowers everywhere. We also found a tree across the road. It would not budge, even with a truck attached. So a-walking we went. Over or around one tree then another, and another. We walked approximately .4 miles and found a deposit. The quartz was pale to medium pink. Though we looked and looked, we couldn't find the *Summer Rose*. We stopped at the **TipTop Mine** looking for pale rose quartz. **Dan and I** hiked down and found a miner's cabin still standing with an old gas refrigerator still there (no beer inside). There were several collapsed tunnels.

Then it was back to camp and dinner. All too soon, snoring from me probably could be heard down at **Lake Isabelle**.

Saturday morning, we found **Michelle Sebresos, Angie Harwood, Dottie Jacobs, Jerry and Barbara**. We also hooked up with the **Northridge "Rock Chippers" and JoAnne Richey**.

From camp, we went back to the area of the "*Summer Rose*". We discovered that we had gone too far. We didn't look over our shoulders to see the "table rock". The right place was below the rock. It is in the burned-out area (fire years ago), meaning NO SHADE. We were there for a few hours.

Potluck was terrific as it always is. Sunday, **Dottie** left early, **Michelle and Angie** left for **Taft**, and **Nancy** went home. Those that were left went to the **Silver Strand Mine**. There, we almost lost **JoAnne's** vehicle as the road edge collapsed and dropped the front tire in a streambed. The road was built up, a 20' snag was put under the front bumper, and she backed out. After that, **Nancy and JoAnne** rode with us. It was scary, to say the least, and we didn't really find anything worth the risky trip.

Greenhorn Mountain Trip Report (Continued)

Note: I'm thinking of issuing a tee shirt that would say, "I survived the Silver Strand Mine road" (the road is actually named Bull Run Road).

From there we went to **Frog Meadow** for smoky quartz. No quartz was found, however, we did encounter snow, lots of mud and mosquitoes. We discovered that **Jerry's** new 4 x 4 had an interesting problem. Anytime a snowpatch appeared, the vehicle would veer toward it and drive through it. **JoAnne** left after lunch, Sunday afternoon. We went to the **Acorn Mine** and were able to get garnets and epidote.

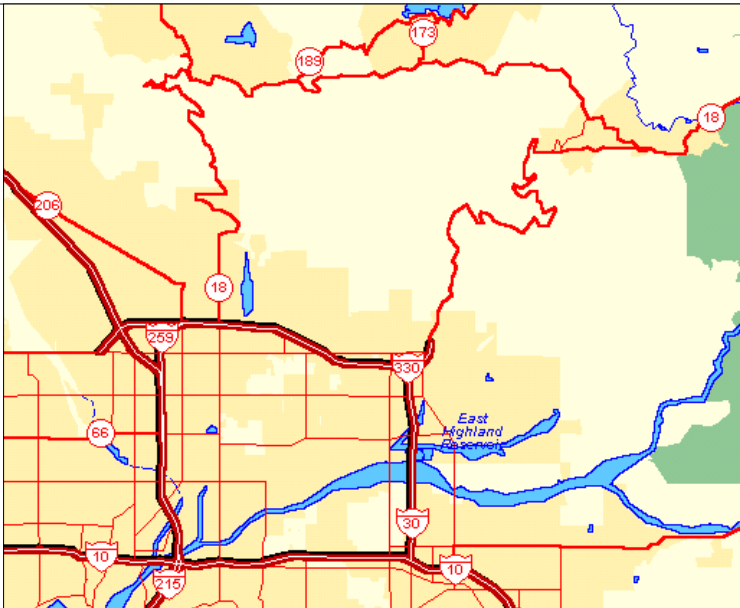
All in all, it was a good trip.

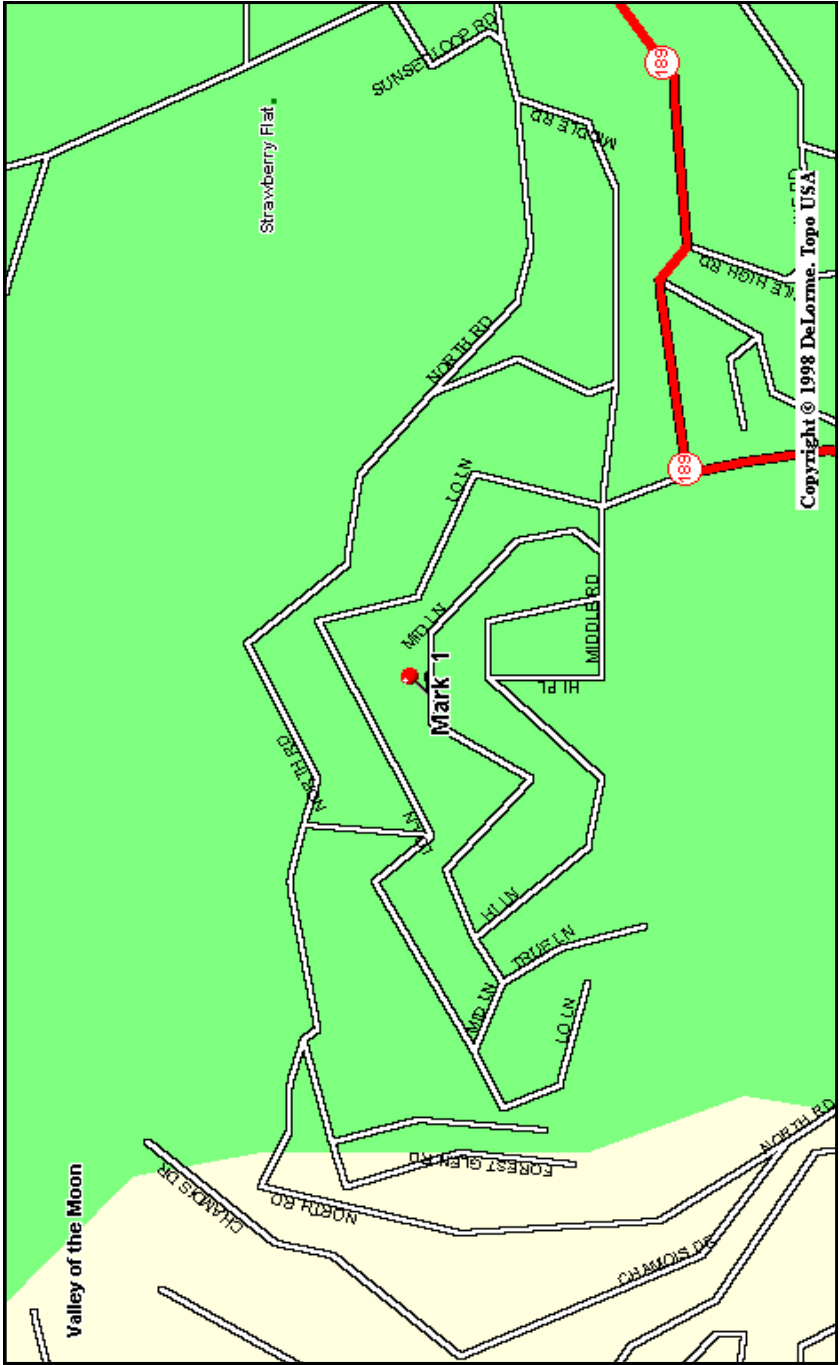
Joe Goetz

Field Trip to Round Valley

Our next trip is to **Round Valley**, in the **San Bernadino Mountains** (we will camp here). Meet at **Phil Terrio's** cabin by Saturday, September 5 by 9:00 AM. Call **Phil Terrio** at (626) 794-0687 if you plan on going. (See attached maps for directions.)

Joe Goetz





AN UPDATE ON MONTANA SAPPHIRES

Sylvia and I have visited Montana several times over the last twenty years. Our interest was primarily in collecting sapphires at one or more of the pay collecting areas. While there five or six years ago, we even called back just prior to the PLS club meeting to see if any members were interested in having us purchase bags of “concentrate” for them. A number of persons ok’ed us picking up bags for them. At the time we were close to Philipsburg, Montana, and trying our hand at the Gem Mountain Sapphire mine located about twenty miles our of town on the West fork of Rock Creek.. We felt like it was one of the better, if not the best place, to collect sapphires on a “pay” basis.

Last year we visited Montana, looking forward to once again collecting at the same location. Much to our dismay, we found that the mine, and a number of other popular sapphire collecting locations had been taken over by the American Gem Company for commercial purposes and the mines closed to the public. We tried collecting at several other small locations offering “concentrate” but found the sapphires few and far between. While in Montana we heard rumors from several sources that the American Gem Company had over-expanded and that they were in the process of selling off some of their large expensive pieces of machinery. Sounded like their attempt to corner the sapphire market was falling far short of their expectations.

We recently received a letter from a 78 year old Montana resident, **Mark Bielenberg**, detailing information that the previously known **Gem Mountain Sapphire mine**, with a new name, “**Jewel of the Rockies**”, is open for public collecting again.

Mark has an extensive knowledge of sapphire collecting in Montana and has been acquainted with many of the miners who earned a living at various sapphire locations over the years.

In 1965, *Mark* put together an exhibit of over 200 cut stones of many colors along with piles of rough, including rubies. He donated the exhibit as a gift to the Granite County Museum in Philipsburg where the public can view the many colors of Montana sapphires.

Marc Bielenberg can be reached at:
276 Noland Drive
Hamilton, MT 59840
(406)363-6780

For more information about the “Jewel of the Rockies” mine contact:

Jewel of the Rockies
PO Box 709
Philipsburg MT 59858
or call:
Lee McBride at
(406)859-5055

We offer the above information as a method of alerting interested rockhound members who maybe want to collect sapphires in Montana. As with any suggested collecting location, check it out for yourself, buy only one or two buckets to “sample” the location. From that point, you’re on your own.

Vern & Sylvia Cliffe

Things We Can Learn From A Dog

From The Elkcast

- ✓ Be loyal.
- ✓ Run, romp, and play daily.
- ✓ Eat with gusto and enthusiasm.
- ✓ Take a nap and stretch before rising.
- ✓ Delight in the simple joys of a long walk.
- ✓ Avoid biting when a simple growl will do.
- ✓ Never pretend to be something you're not.
- ✓ Thrive on attention and let people touch you.
- ✓ If what you want lies buried, dig until you find it.
- ✓ Never pass up the opportunity to go for a joyride.
- ✓ When it's in our best interest, practice obedience.
- ✓ Let others know when they've invaded your territory.
- ✓ When loved ones come, always run to greet them.
- ✓ On hot days, drink lots of water and lie under a shady tree.
- ✓ When you're happy, dance around and wag your entire body.
- ✓ Allow the experience of fresh air and the wind in your face to be pure ecstasy.
- ✓ No matter how often you're scolded, don't buy into the guilt thing and pout... run right back and make friends.
- ✓ When someone is having a bad day, be silent, sit close and nuzzle him or her gently.

Via NOC Web Page

THE JADES: COLORS AND CONTROVERSIES

by Lyle G. Gable
from Jax Gems 8/95

(Honorable Mention in 1996 AFMS Adult Article Contest)

Jade and the color green are so inexorably linked that many people believe all jade to be green. theoretically, pure jade, both nephrite and jadeite, should be white. Metallic salts in the form of oxides and silicates present, either alone or in combinations, and in varying degrees, are responsible for the vast array of colors, hues, shades, tints and tones, including multi-colors possible in jade. In rare instances, four or five colors may appear in a single stone. The green of jadeite is produced by chromium, the green of nephrite by iron. The degree of coloring agent present is presumed to determine the intensity of the color, a supposition partially refuted by the occasional occurrence of near- white nephrite with a high iron content.

That jade has a wide range of colors is not in dispute, but opinions differ as to whether jadeite or nephrite has the greater range. What is probably the majority view is stated by Gerald Hamrich in *The Handbook of Jade*. He writes the color range of jadeite exceeds that of nephrite. The opposite view is expressed in Judith Moorhouse's *Collecting Oriental Antiques*. Ms. Moorhouse contends that the range of nephrite is the greater.

In common with jades of other colors, white jade can be of many shades. While the near-whites and off-whites are not extremely scarce, a true, pure-white jade is rare. Again, there are conflicting opinions. Paul Desautels writes in *The Sometimes Green Stone* that a pure white jade is almost surely jadeite. Oscar Luzzatto-Bilitz claims in his *Antique Jade* that only jade (nephrite) and not jadeite can be pure-white.

Such unusual jade colors as red, lavender, blue, mauve and purple are acknowledged but the existence of pink jade is very much in doubt. Of twenty books treating, in whole or in part, with jade and its colors, eight list pink as a color for either jadeite, nephrite or both. Authors expressing opposite beliefs are Joan M. Hartman and Richard Gump. Mrs. Hartman, in her *Chinese Jade of Five Centuries* concludes pink jade is non-existent, 'having never found even one example in the course of her researches. She also quotes Mr. Robert Crowningshield, a Director of the G.I.A., as stating that he had never encountered a single item of pink jade in twenty-five years of examining minerals. Mr. Gump's book, *Jade: Stone of Heaven* postulates the occurrence of pink jade and includes a color plate of what purports to be a pink nephrite cup. A few years ago, on a visit to the Norton Gallery in West Palm Beach, I may have seen a patch of pink jade. I am sure I saw a spot of

pink on a water couple in the Chinese Collection. The collection catalog designated the area as pinkish blush but only tentatively identified the couple as Burmese jadeite.

While it is probable that I will remain uncertain as to the existence of pink jade, it is even more probable that I will continue to hear someone exclaim, "But I thought jade was always green!"

From AFMS Newsletter 02/98

OUT OF THE PAST



Louis Goss was collecting rocks in Southern California 100 years ago or more. I assume he was a member of the first Los Angeles area rock club. Can anyone come up with information on that? This photo of him was taken by me in 1957 out near Calico. At that time he was in his eighties. I believe he died in the 1960s. **Gossite** was named after him. Besides collecting rocks, he painted numerous desert landscapes. I got to know **Mr. Goss** about 1955 through the Montebello rock club (I became a charter member when I joined in 1953). He had a backyard full of rocks and had been inviting over rockhound groups in an attempt to dispose of

them. By the time I visited his back yard, pickings were slim. I think I purchased a few so-so agates and that was about it. He lived at 508 Margaret in East Los Angeles.

Darryl Futrell
6222 Haviland Ave
Whittier CA 90601-3735

THE WORLD'S EASIEST QUIZ

- 1) How long did the Hundred Years War last?
- 2) Which country makes Panama hats?
- 3) From which animal do we get catgut?
- 4) In which month do Russians celebrate the October Revolution?
- 5) What is a camel's hair brush made of?
- 6) The Canary Islands in the Pacific are named after what animal?
- 7) What was King George VI's first name?
- 8) What color is a purple finch?
- 9) Where are Chinese gooseberries from?
- 10) How long did the Thirty Years War last?

ANSWERS

- 1) 116 years, from 1337 to 1453.
- 2) Ecuador.
- 3) From sheep and horses.
- 4) November. The Russian calendar was 13 days behind ours.
- 5) Squirrel fir.
- 6) The Latin name was Insularia Canaria - Island of the Dogs.
- 7) Albert. When he came to the throne in 1936 he respected the wish of Queen Victoria that no future king should ever be called Albert.
- 8) Distinctively crimson.
- 9) New Zealand.
- 10) Thirty years, of course. From 1618 to 1648.

From AFMS Newsletter 02/98

On a sadder note...

Our most heartfelt condolences go out to **Tony and Sandie Fender** on the passing of Tony's mother, **Sue**. We enjoyed the pleasure of **Sue's** company on several field trips during the last year and will miss her.

Jay, Josephine, Jason and Erin Valle

Lapidary Digest e-mail list

You are invited to join the Lapidary Digest e-mail list, a free mail list devoted solely to all the Lapidary arts except faceting. It focuses on the cutting, carving, shaping, knapping, polishing and assembly of rocks or minerals into cabs, special shapes, intarsia and channel work pieces. Tumbling, slab and trim sawing, the types and properties of stones used for lapidary, and the treatments of these stones are all proper topics for discussions. The list has over 1200 subscribers and is sent out in digest form, about twice a week.

To join, send a message to <<lapidary@mindspring.com>> with the word **SUBSCRIBE** on the subject line of the message . This is a programmed subscription which picks up your e-mail address from your message, so be sure to subscribe from the computer to which you want the Digest to be sent. All future communications with the Digest computer must be from the same computer address.

A Welcome letter will be sent to you shortly after you subscribe, containing policies and procedures for interacting with the Digest. We hope you will join and participate; and look forward to seeing you there..

Hale Sweeny

Administrator, Lapidary Digest
hale2@mindspring.com
Durham, NC

Some Interesting Web Pages

(Interesting to me!)

1. Bob's Rock shop:
<http://www.rockhounds.com/>
2. Whittier Gem & Mineral Society Web Page:
<http://amonix.com/WGMS.html>
3. North Orange County Gem & Mineral Societies Web Site:
<http://home.inreach.com/o-nocgms/>
4. California Rock Collecting Web Sites:
<http://www.gemandmineral.com/states/california.html>
5. Southern California Rock Collecting Localities:
<http://www.cco.caltech.edu/~naturboy/rocks/rockloc.html>

JValle

GEM AND MINERAL SHOWS

- Sept 4 - 7** **Fort Bragg** - Mendocino Coast Gem & Min. Club. 36th Annual Show. Tradewinds Convention Center 400 S. Main Street. Hours: 4th - 6th 10 - 6, 7th 10 - 4
- Sept 10 - 27** **Pomona** - 76th Annual L. A. County Fair Gems and Minerals exhibits, Fairplex.
- Sept 19 - 20** **Paso Robles** - Santa Lucia Rockhounds, 7th Annual Rockhound Roundup. Pioneer Park and Museum, 2010 Riverside Ave. Hours: Sat 10-6, Sun 10-5
- Sept 19 - 20** **Redwood City** - Sequoia Gem & Mineral Society's 32nd Annual "Harvest of Gems". Community Activities Building, 1400 Roosevelt Ave. Hours: 10 - 5 daily.
- Sept 19 - 20** **Anaheim** - Faceter's Guild of Southern California, Brookhurst Community Center, 2271 W. Crescent Ave. Hours: Sat 10-6, Sun 10-5
- Sept 26 - 27** **Downey** - Delvers Gem & Mineral Society. Downey Women's Club, 9813 Paramount Blvd. Hours: Sat 10 - 6, Sun 10 - 5.
- Sept 26 - 27** **Vista** - Vista Gem & Mineral Society. Brengle Community Center, 1200 Vale Terrace. Hours: 10 - 5 daily.
- Sept 26 - 27** **Stockton** - Faceter's Guild of Northern California. 33 W. Alpine Ave. Sat 10 - 5, Sun 10 - 4.
- Sept 30 - Oct 4** **Joshua Tree** - The Sportsman's Club Jamboree and Tailgate. 6225 Sunburst. Hours: 8 - 5 daily.

Vern Cliffe

A Taxing Problem

A Dutchman was explaining the red, white and blue Netherlands flag to an American. *Our flag is symbolic of our taxes. We get red when we talk about them, white when we get our tax bill and blue after we pay them.* The American nodded. *It's the same in the USA, only we see stars, too!*

from Breccia 03/98, via SMS Matrix 04/90

SEE
 12,500 POUND
 "OLD WOMAN"
 METEORITE
 (REPLICA)
 AND
 ACTUAL SPACE
 TEKTITES

WHITTIER GEM & MINERAL SOCIETY'S

**"TREASURES OF
ROCKHOONDING"**

OCTOBER 17TH & 18TH, 1998
 SATURDAY 10 - 6, SUNDAY 10 - 5
 WHITTIER MASONIC TEMPLE
 GREENLEAF & MAR VISTA, WHITTIER
 SOMETHING FOR ALL AGES

Editor: Jay Valle, 1421 Latchford Avenue, Hacienda Heights, CA 91745
 Home: (626) 336-3714; Work/Voice mail: (909) 396-2332;
 e-mail: jayv@aqmd.gov

Bulletin exchanges are welcome and should be sent to the editor.

Affiliations

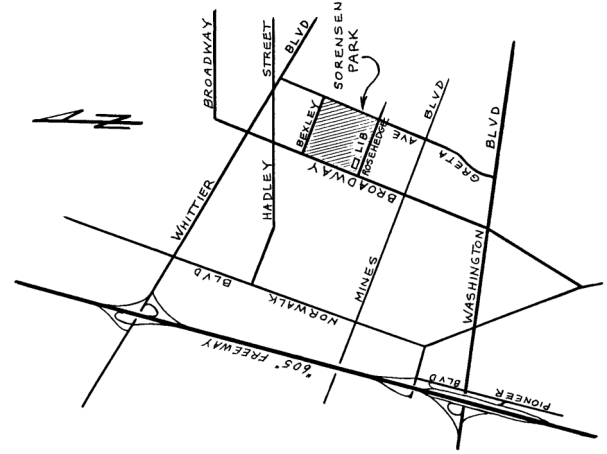


California Federation of Mineralogical Societies
 American Federation of Mineralogical Societies
 Special Congress Representing Involved Bulletin Editors



Whittier Gem and Mineral Society, Inc.

P.O. Box 865
Whittier, California 90608-0865



Meeting Date: September 24, 1998 at 7:30 PM
Location: Sorensen Park (See Map)