

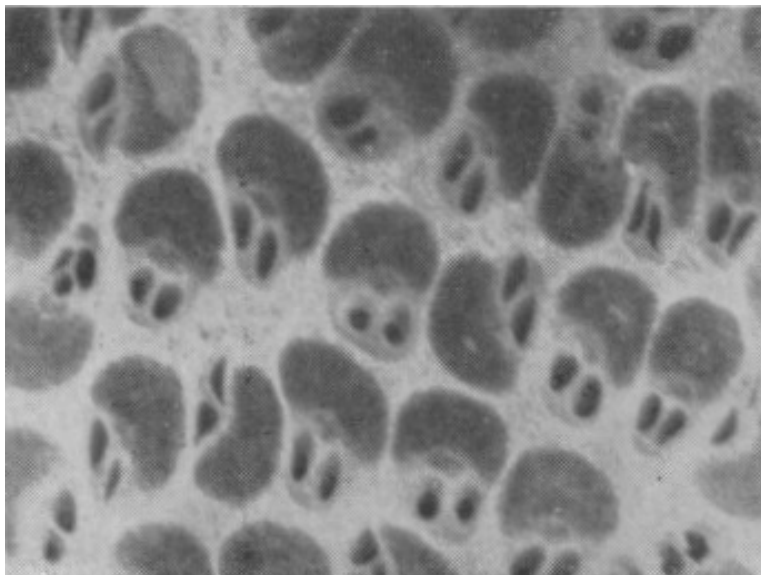
WHITTIER

ROCKHOUNDER
GEM & MINERAL
SOCIETY

A
P
R
I
L

2
0
0
6

General Meeting: April 27, 2006 at 7:30 PM



Petrified Rock Lice - see pg. 4

ROCKHOUNDER

THE PREZ SEZ:

It is said that April showers bring May flowers. It also brings new specimens of cutting / collecting material to the surface. Though the amount of rain hasn't been as much as last year, we haven't been to all the possible areas to collect either. So there is the definite possibility when we do get to an area there will be even more for us to find.

Of course the only way to find that one of a kind bragging piece is to go out there and find it. I'm not saying that we should go and risk ourselves to harm, but if a trip is planned that as rockhounds we should try to attend and in that way we show our appreciation to the field trip chairman. There are times when no matter how well a trip is planned there can be situations that just don't allow for the opportunity to go on the trip. In the same token if you end up leading a trip and no one shows up it can be depressing, but what I have learned as fieldtrip chairman is not to take it personally. When this has happened to me or anyone else who has lead a trip, the thing I and others have done was to go to the sites that were planned and go and find the bragging specimen.

Many of us have been out in the desert and the weather was everything in the way of weather but not perfect. The March trip was one such trip. It was not well attended, primarily because of the weather reports predicting snow and heavy rain out there.

This month there are possibilities for trips to go and collect. However, we need to work on means of contacting the person leading the trip if you are going to cancel and not go. That way the leader isn't going to wonder where everyone is.

Enough said, as the weather becomes less frigid and as it warms, the rain brings one more thing that makes people cringe. That thing is weeds and they come up by what seems like thousands. I know that out there somewhere is some great cutting material, I just have to pull up the weeds before the seed pods, clusters release the next generation. If I can do that like the TV show the weeds will fail to launch. Have a good and safe day whatever you do this month.

Joe Goetz

WGMS General Meeting

Thursday, April 27, 2006

at 7:30 PM

We are still working on a “killer” program for this month but it is not in-the-bag at this time. Bring something to brag about to the meeting and we will see you there.

Izzie

Phyllis Radabaugh Passed Away

Some of you may remember former WGMS members Jack and Phyllis Radabaugh. Jack died last year and Phyllis passed away last week.

“Petrified Rock Lice”

The photomicrograph on the front cover of considerable "scientific" interest to rockhounds, particularly those who travel the Mojave Desert. It could account for many unexplained restless nights while camping under the stars in this desert region.

Seldom Seen Slim, sometime "mayor" of Ballarat, says, "This rock contains petrified rock lice. These little rascals are the ancestors of the present day shirt rabbits, seam squirrels and cooties. *(They may even be a forerunner of the stick lizard. Ed.)*

"On warm days in Death Valley, some rockhounds 'in the advanced stages' are able to detect some movement in these parasites. This leads me to suspect that they are not completely dead, but merely dormant.

"Extreme care should be used so that these pests do not escape and contaminate other beautiful rocks in Calif."

For those who really want to know, the picture is a photomicrograph of a piece of petrified palm. The photo and a specimen of palm were supplied by Lee Seabridge of Norwalk, Calif. Ed.

From Gems & Minerals – May 1960 pg.81

**Rock Gabbers Roundup
April 1, 2006**

Kind of sounds like an April Fool's joke but it isn't. Rock Gabbers met at Jay & Kathy Valle's home on April 1 and Tony Fender taught us more in his series on silver soldering and chain-making. It was well attended by 14 members and we produced the chain-of-the-day, a fine silver necklace which involved making correctly sized jump rings, soldering the rings together, then stretching them into the desired final shapes. Fun and education was had by all.

George Snyder, a friend from the Pasadena Club who now lives in Idaho, was on hand to observe and give advise to the budding crafts-persons present (George is an excellent silversmith and chain maker).

Afterwards, an excellent potluck was enjoyed by most of us and we enjoyed each other's company into the evening.

Thank you Tony for your great programs and thank you all who came and participated.

Treasure Shell & Gem Scoop



Now Available! Estwing stopped making the shell and gem scoop in 2004 and they have been sorly missed by the beachcomber and rockhound communities ever since. This Treasure scoop is made to the the same specifications as the traditional Estwing Shell and Gem Scoop which makes rockhounding a pleasure. Incredibly strong, made of a strong rust proof, featherweight all-aluminum alloy, weighs only 1 pound and over-all length measures 37", with an easy to see orange non-slip nylon vinyl grip that is molded on - can't come off or wear out comes complete with leather wrist strap (not shown).

List price \$41.95.

Go to <http://www.4facets.com> for more info and order forms.

April Birthstone : Diamond
Birthstone Color: White, Clear

April's birthstone is remarkably simple in composition, yet stunning in its unique ability to reflect and refract light into vivid flashes of brilliant color. The ancient Hindus called the Diamond "Vajra," meaning lightening, both because of the sparks of light thrown off by this gem as well as its invincible strength. The Diamond is harder than any other substance on earth.

Diamonds have been revered throughout history. Used to embellish such items as crowns, swords and emblems as well as jewelry, they've even been part of national holidays. Queen Victoria declared the celebration of her 50th year of reign a "Diamond Jubilee." Diamonds have also been credited for having certain medicinal properties. During the middle ages, these gemstones were thought to heal illness, but only if the ailing person took the Diamond into bed to warm it up first!

Formed deep within the earth where there is intense heat and pressure, Diamonds are simply crystallized carbon. Volcanic activity of centuries ago brought these gemstones to the earth's surface, where they are found either within volcanic rock formations or washed out into rivers. India is thought to be the first river-bed source of Diamond mining, but today these gemstones are found primarily in Australia, the Soviet Union, and Africa.

No more notable in its uncut state than a plain pebble upon the beach, the true beauty of the Diamond was not revealed until the 16th century, when gemstone cutting and polishing techniques were perfected. Prior to this time, it was considered taboo to modify the original state of a Diamond. Today, the value and appeal of this stone depends largely upon how skillfully it is cut and faceted.

A gift of a Diamond is symbolic of everlasting love. There is no more convincing a promise of an enduring relationship than the brilliant gemstone that has endured in people's hearts throughout the ages.

From <http://www.about-birthstones.com/>

**Rare Deposit Found
on Elephant Mountain**

Hikers exploring around Elephant Mountain near Barstow, California last month discovered a deposit of the rare mineral Phulesapatite. Only one other deposit of this quality has ever been discovered and that was in a pegmatite in Maine. The mineral is found as fine pink to brown crystals of stout prismatic to tubular habit inside of round or log-shaped nodules. Note: These gems must be kept in the dark if their original color is to be maintained, otherwise they change to darker brown in prolonged sunlight.

Elephant Mountain derives its name from the view from a distance which resembles a reclining or sleeping elephant. These mineralogically interesting specimens occur on the north end of the formation which would roughly correspond to the tail region of the reclining elephant. Apparently mining has occurred sometime in the past because a hole of unknown depth is just above the deposits. Also, illegal dumping apparently has taken place sometime in the past because of the overwhelming foul smell permeating the immediate area.

The discoverer's said that they have no interest in actually mining the outcropping or exploring the tunnel themselves. But they do feel that the precise location should be kept a closely guarded secret to preserve the unique nature of the site for future generations.

Prof. Semoure Bottoms, University of Yermo

The Whittier Gem & Mineral Society is happy to welcome a new sponsor of our Club, South Western Federal Credit Union.



**South Western
Federal Credit Union**

Contact (562) 694-8296 for information

**CFMS Field Trip
Ludlow area for Thulite and much more.
April 8 - 9, 2006**

By Bob Fitzpatrick, CFMS field Trip Chair South

Trip Location: Ludlow, California area, approximately 50 miles east of Barstow off of Interstate 40.

When: April 8 & 9, 2006

Sponsor: CFMS Field Trip South & Orange Belt Mineralogical Society of San Bernardino.

Organization: CFMS & OBMS

Material to Collect: Zoisite, (massive pink & green Thulite). Hardness 6-6.5, polishes nicely also Agate, Jasper, Fluorite and much more.

Leaders: Al Carrell & Emma Couveau.

Proposed Schedule: Saturday, April 8th, we will meet at Ludlow on the South side of the cafe at 9:00 a.m.

Directions to Campsite: At 9:15 Al & Emma will lead us from Ludlow to the camping site.

Note to WGMS/PLS Members: Several of us will be camping at an old-time favorite location known to WGMS field trippers as "The Bowl" at Lavic Siding rather than the CFMS camp. Contact Jay Valle at (626) 934-9764 if you need other info or directions. Someone should be there by Friday evening.

Camp & Facilities: We will be camping on black top. This will be dry camping, there will be no water, picnic tables, toilets, no firewood to be gathered and no fees.

Tools: Collecting bags or buckets, rock hammer, eye gear, flashlights, spray water bottle, etc. Don't forget to bring your camp chair (we will be sitting around the campfire at night).

Safety Concerns: Do not lick the rocks, use sun screen, stay away from

rattlesnakes, use bug spray, be aware of flash floods, be extra careful, don't wander off by yourself and don't get lost. Two wheel drive is OK to camping area.

Climate & Weather: It can be hot during the day and cold at night, it could rain.

Clothing: Appropriate for this time of the year.

Other Remarks: All CFMS & AFMS club members and there guests are welcome to join us. Come for the day or camp out with us. Bring food, lots of water, a camera and firewood for the campfire at night. If you need a motel or supplies they are available in Barstow. Don't forget we will have a potluck on Saturday night, so bring a dish of food to share and your place setting. After dark we will have a campfire where we can all join together and have a good time roasting marshmallows, telling jokes or just talking about the good OLE times.

We must all observe the AFMS code of ethics and sign a consent and assumption of risk waiver of liability form.

For additions information call Al Carrell at (951) 961-5988

**WGMS/PLS Field Trip
April 29-30, 2006**

"Yuha" f ta Love It This Month

This month, April 29-30, our field trip will be to the west Imperial Valley in the Yuha Basin.

We will have the opportunity to collect Agate, Jasper, Concretions, selenite, petrified wood, fossils, and more in this historical and highly geologic area.

Our camp will be in the O.H.V. Area one mile west of Plaster City (W 32° 47.36' x N 115° 52.83'). This is dry camping at its best.

Please bring fire wood for the camp and your guide books for this trip.
Much information is also available on the internet.

Contact **Dave Kelty** at (626) 303-7821 for more information.

Dave

**Holbrook, Arizona Field Trip
for Petrified Wood
April 15 & 22, 2006**

Hello all: Sedona Gem & Mineral Club has arranged for Southern California rock clubs to come out to a ranch in Holbrook, Arizona. on **April 15 and 22, 2006** to collect and purchase petrified wood.

The collecting area is one of the large ranches outside of the Petrified Forest National Park. The petrified wood can be found on the surface or you can dig for better or bigger pieces (buy a log, if you want). Note: bring 5-gallon buckets. People will be on hand to help you load any "monster" pieces you may choose.

When yo are finished, whatever you put into your vehicle must be removed for weighing. Sizable pieces, which are guesstimated at a lesser weight do not have to be removed. There is a charge of \$1.00 for the stuff you want to keep from logs to dinosaur dung.

We will meet at the **International Petrified Forest Museum of the America's** at 8:00 AM. The Museum is on the South side of HWY 40, Exit #292, about 3 miles East of Holbrook.

Lodging can be found in Holbrook. There may be a discount rate of \$32.00 + tax = \$35.54 for 2 people per night at the Best Inn, 2211 Navajo Blvd, Holbrook, AZ if you mention you are with a rock club and are there for the sale. Phone number is 928-524-2654. If you go to Google.com and enter their phone number in the search field, you can follow a link to Mapquest.

Other Motels in the close vicinity are: (This is old info I did not call.)

Super 8 - list cost is \$49 (928) 524-2781

Motel 6 - List cost is \$36 (928) 524-6101

Econo Lodge - List is \$45 (928) 524-1448

Information supplied by Richard S. Mueller

**Australian Crystals or ...
We Love Our Customers
(especially when they buy stuff)**

One of our regular dealer friends, Susy Martin of "Jewelry ... By George" was operating a booth at the Lone Pine Film Festival and an enthusiastic 50-something woman came to the booth, visiting 2-3 times a day. She had just returned from an outing with her daughter and grandchildren, and the following conversation ensued.

"I just love those "Australian" crystals."

Cheri: "Those are Czech crystals."

Lady: "Yeah, those."

She continues looking . . .

"Of course they aren't as expensive as those "Sikorsky" crystals. You know they won't tell anyone how they make them, the recipe is a secret. But all you have to do is get one of those gem books, the recipe is right in there, you could make your own!"

She continues

"But you have to be careful with those "Australian" crystals . . . you can't hang too many of them in your kitchen window I know from experience, they will catch your kitchen curtains on fire."

As a parting shot she said, "They do that 'cause they are "magnetic" to the sun."

Then she left.

And not a second too soon.

After about 15 seconds of silence Cheri said, "Well now, that was interesting."

I just looked at her and started laughing until I had tears in my eyes.

*Susy Martin
Jewelry ...By George*

Jury Duty Scam

The Phone Call You Got About Jury Duty May be From Crooks-Truth!

Summary of the eRumor

The eRumor warns that you could get a phone call from someone claiming that you failed to show up for jury duty and that a warrant has been issued for your arrest.

The caller then wants to confirm your personal information such as Social Security number and other financial data.

The email says they are actually crooks who are trying to get enough information to commit identity theft.

The Truth

There is evidence that this scam has actually taken place although at this point most of the publicity across the country is about the eRumor, not the scam itself.

TruthOrFiction.com has found that authorities in several states have issued news releases about the scam including in Arizona, Iowa, Washington, Arkansas, Illinois, New Jersey, South Dakota, and Utah as well as Canada.

The Better Business Bureau of North Alabama issued an alert quoting the eRumor word for word.

The interesting part is that many of the releases by state attorney's general offices or police say "it hasn't happened in our state yet" and most of the releases appear to be repeating the information from the eRumor.

Regardless, it's a good warning to remind us that there is a large variety of methods used right now by identity thieves to try to trick us into revealing our financial information such as Social Security numbers, ATM pin numbers, passwords, etc.

If you get any inquiries for your personal financial information, don't give it.

Instead, make direct contact with the organization claiming to want it and verify that the request was really from them.

Example

A real example of the eRumor as it has appeared on the Internet: Here's a new twist scammers are using to commit identity theft: the jury duty scam. Here's how it works:

The scammer calls claiming to work for the local court and claims you've failed to report for jury duty. He tells you that a warrant has been issued for your arrest.

The victim will often rightly claim they never received the jury duty notification. The scammer then asks the victim for confidential information for "verification" purposes.

Specifically, the scammer asks for the victim's Social Security number, birth date, and sometimes even for credit card numbers and other private information -- exactly what the scammer needs to commit identity theft.

So far, this jury duty scam has been reported in Michigan, Ohio, Texas,

Arizona, Illinois, Pennsylvania, Minnesota, Oregon and Washington state. It's easy to see why this works. The victim is clearly caught off guard, and is understandably upset at the prospect of a warrant being issued for his or her arrest. So, the victim is much less likely to be vigilant about protecting their confidential information.

In reality, court workers will never call you to ask for social security numbers and other private information. In fact, most courts follow up via snail mail and rarely, if ever, call prospective jurors.

Action:

Never give out your Social Security number, credit card numbers or other personal confidential information when you receive a telephone call. This jury duty scam is the latest in a series of identity theft scams where scammers use the phone to try to get people to reveal their Social Security number, credit card numbers or other personal confidential information.

It doesn't matter *why* they are calling -- all the reasons are just different variants of the same scam.

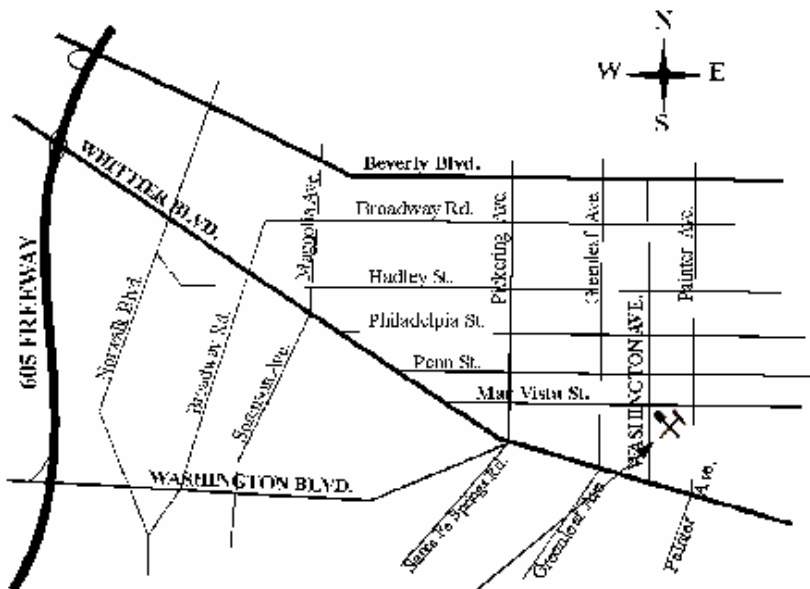
Protecting yourself is simple: Never give this info out when you receive a phone call.

http://www.truthorfiction.com/rumors/j/jury_duty_scam.htm

Upcoming CFMS Gem Shows

- Apr 22-23 Lancaster, CA.** Antelope Valley Gem & Mineral Club
Antelope Valley Fairgrounds, 2551 West Avenue H
Hours: 9 - 5 both days
- May 6-7 Anaheim, CA.** Searchers Gem & Mineral Society
2271 W. Crescent Avenue
Hours: 10 - 4:30 both days
- May 6-7 Bakersfield, CA.** Kern County Mineral Society
Kern County Fairgrounds, 1142 South P Street
Hours: 10 - 5 both days
- May 6-7 Bishop, CA.** Lone Pine Gem & Mineral Society
Eastern Sierra Gem & Mineral Show
Hours: Sat. 9 - 5; Sun. 10 - 4
- May 20-21 Newbury Park, CA.** Conejo Gem & Mineral Club
Borchard Park Community Center, 190 Reino Rd.
Hours: Sat. 9-5 Sun. 10-4:30
- May 20-21 Yucaipa, CA,** Yucaipa Valley Gem & Mineral Society
Yucaipa Community Center, 34900 Oak Glen Road
Hours: Sat. 9 - 5; Sun. 10 - 4
- June 3-4 Glendora, CA.** Glendora Gem & Mineral Show
859 E. Sierra Madre
Hours: Sat. 10 - 5; Sun. 10 - 4
- June 3-4 La Habra, CA,** North Orange County Gem & Mineral Society
La Habra Community Center, 101 W. La Habra Blvd.
Hours: 10-5 both days
- Jun 9-11 Angels Camp, CA.** Calveras Gem & Mineral Society
CFMS Show
Calveras Co. Fairgrounds
Hours: 10-5 daily
Admission is \$5; Kids 12 & under Free with Adult
Website: calaverasgemandmineral.org

WGMS MEETING LOCATION!
Whittier Community Center
7630 Washington Ave. Whittier



MAR VISTA & WASHINGTON AVE.  WHITTIER COMMUNITY CENTER

Editor: Jay Valle, 1421 Latchford Avenue, Hacienda Heights, CA 91745
Home: (626) 934-9764; E-Mail: jvalle@aqmd.gov
Bulletin exchanges are welcome and should be sent to the editor.

Affiliations



California Federation of Mineralogical Societies
American Federation of Mineralogical Societies
Special Congress Representing Involved Bulletin Editors



Whittier Gem and Mineral Society, Inc.
Post Office Box 865, Whittier, California 90608-0865
Editor: Jay Valle, 1421 Latchford Ave.
Hacienda Heights, CA 91745

Meeting Date: April 27, 2006 at 7:30 PM
Location: Whittier Community Center
(see page 4 for information)